

REGISTRY OF

11 MAR 2003

MEMBERS' INTERESTS

HOUSE OF REPRESENTATIVES

REGISTER OF MEMBERS' INTERESTS
STATEMENT OF REGISTRABLE INTERESTS

Returning Members - declare at p1-6, interests as at the
dissolution of the last Parliament (17 October 2007)
and at p.7 alterations since that date

Newly elected Members - declare at p. 1-6, interests as
at the date of election, and at p.7 alterations since
that date

Notes:

- (1) It is suggested that the accompanying Explanatory Notes be read before the return is completed.
- (2) The information which you are required to provide is contained in resolutions agreed to by the House of Representatives on 9 October 1984, a.m. as amended on 21 March 1985, 19 February 1986, 22 October 1986, 30 November 1988 and 9 November 1994 and 16 October 2003. It consists of the Member's registrable interests and the registrable interests of which the Member is aware (a) of the Member's spouse and (b) of any children who are wholly or mainly dependent on the Member for support. For the definition of "dependent children" see the introduction to the Explanatory Notes.
- (3) If there is insufficient space on this form for the information you are required to provide, you may attach additional papers for that purpose. Each paper attached to this form should be signed personally by you and dated.

Surname COULTON Other Names MARK MACLEAN
Electoral Division PARKES State N. S. W.

1. Shareholdings in public and private companies (including holding companies) indicating the name of the company or companies

Name of company or company or companies to which referred	
Self	Commonwealth Bank of Australia (CBA)
	AWB Limited
	MM and RA Coulton Self-managed Super Fund (see attached list)
Spouse	Commonwealth Bank of Australia (CBA)
	AWB Limited
	Insurance Australia Group Ltd (IAGL)
Dependent Children Spouse (cont)	MM and RA Coulton Self-managed Super Fund (see attached list)

2. Family and Business Trusts and Nominee Companies

(i) in which a beneficial interest is held, indicating the name of the trust, the nature of its operation and beneficial interest

	Name of trust/nominee company	Nature of its operation	Beneficial interest
Self			
Spouse			
Dependent Children			

(ii) in which the Member, the Member's spouse, or a child who is wholly or mainly dependent on the Member for support, is a trustee (but not including a trustee of an estate where no beneficial interest is held by the Member, the Member's spouse or dependent children), indicating the name of the trust, the nature of its operation and the beneficiary of the trust

	Name of trust/nominee company	Nature of its operation	Beneficial interest
Self			
Spouse			
Dependent Children			

3. Real estate, including the location (suburb or area only) and the purpose for which it is owned

	Location (suburb or area only)	Purpose for which it is owned
Self	3 Olive Pyke Tce, Warialda 2402	Investment
	5 Olive Pyke Tce, Warialda 2402	Residence
	"Clamally Park" Warialda 2402	Farming
Spouse	3 Olive Pyke Tce Warialda 2402	Investment
	5 Olive Pyke Tce Warialda 2402	Residence
	"Clamally Park" Warialda 2402	Farming
Dependent Children		

4. Registered Directorships of companies

Self		
Spouse		
Dependent Children		

5. Partnerships indicating the nature of the interests and the activities of the partnership

	Partnership Name	Interest in Partnership	Activity of Partnership
Self	MM and RA COULTON	Partner	Farming
Spouse	MM and RA COULTON	Partner	Farming
Dependent Children			

6. Liabilities indicating the nature of the liability and the creditor concerned

Self		
Spouse		
Dependent Children		

7. The nature of any bonds, debentures and like investments

Self		
Spouse		
Dependent Children		

8. Saving or investment accounts, indicating their nature and the name of the bank or other institutions concerned

Self	Cash Management Account	Suncorp Metway
	Revolving Credit Account	Suncorp Metway
	Classic Plus Account	Westpac
Spouse	Cash Management Account	Suncorp Metway
	Revolving Credit Account	Suncorp Metway
	Classic Plus Account	Westpac
Dependent Children	Savings Accounts	Westpac

9. The nature of any other assets (excluding household and personal effects) each valued at over \$7,500

Self	Farming plant	
Spouse	Farming plant	
Dependent Children		

10. The nature of any other substantial sources of income

Self	
Spouse	
Dependent Children	

11. Gifts valued at more than \$750 received from official sources, or at more than \$300 where received from other than official sources provided that a gift received by a Member, the Member's spouse or dependent children from family members or personal friends in a purely personal capacity need not be registered unless the member judges that an appearance of conflict of interest may be seen to exist

Self	
Spouse	
Dependent Children	

12. Any sponsored travel or hospitality received where the value of the sponsored travel or hospitality exceeds \$300

Self	
Spouse	
Dependent Children	

13. Membership of any organisation where a conflict of interest with a Member's public duties could foreseeably arise or be seen to arise

Self	
Spouse	
Dependent Children	

14. Any other interests where a conflict of interest with a member's public duties could foreseeably arise or be seen to arise

Self	Councillor - Gwydir Shire Council
Spouse	
Dependent Children	

NOTIFICATION OF ALTERATION(S) OF INTERESTS SINCE DISSOLUTION
OR DATE OF ELECTION

The following alteration(s) of interests have occurred since:

~~The date of dissolution of the House of Representatives~~
~~(This is the relevant date for returning Members)~~

OR

The date of my election
(This is the relevant date for newly elected Members)

(delete whichever not applicable)

ALTERATION

Suncorp Metway Term Deposit

INTERESTS

Signature

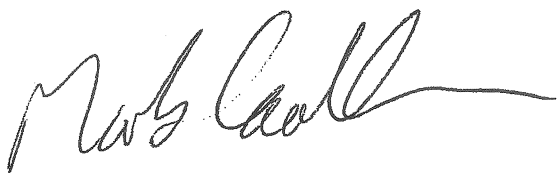


Date

10th March, 2008

MM & RA COULTON SELF MANAGED SUPER FUND

A.B.C. Learning Centres Limited – ABS
Australia and New Zealand Banking Group Limited –ANZ
Global Mining Investments Limited – GMI
Macquarie Group Limited – MQG
Suncorp-Metway Limited –SUN
Westpac Banking Corporation –WBC
Babcock & Brown Infrastructure Group –BBI
Macquarie Countrywide Trust –MCW
Macquarie – Cash Management Trust
IOOF/Perennial Wholesale – Property Trust
Portfolio Partners Prof High Growth Shares
BT Wrap Service Working Cash Account
GVI Global Industrial Share Fund

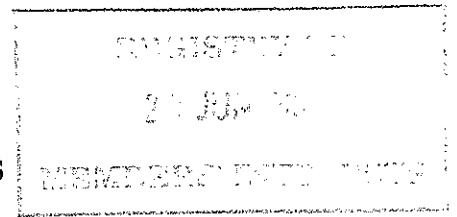


10th March, 2008

/



HOUSE OF REPRESENTATIVES



Register of Members' Interests

Notification of alteration of interests

Name MARK COULTON

Electorate PARKES

The following alteration of interests is notified

ADDITION

Item

Details

Real Estate Unit 311 86-88 Northbourne Ave Braddon ACT.
CANBERRA Residence.

DELETION

Item

Details

3 Olive Pyke TCE - Sold
Classic Plus Account Westpac.
Savings Account. Westpac.
Revolving Credit Account. Suncorp. } Self and Spouse.

Signature Mark Coultan

Date 23/6/10.